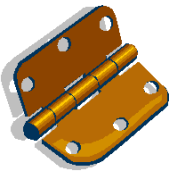


(Researched and written by Chris Sanderson)

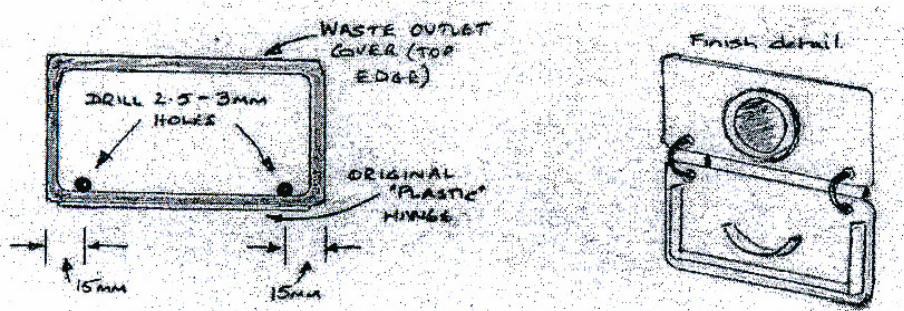
### Waste Water Outlet Covers.



How many of these have been lost over the years because of their design in respect of the cover hinge, which in my experience, can fail at any time. If your covers are still in place and you want them to remain so, the following will help.

You will need 2 off 15 - 20mm key rings per cover and a 2.5 - 3mm drill bit and drill.

With the cover in place - carefully drill two 2.5mm holes, 15mm from each edge and just above the moulding line (as shown in the sketch below) through the cover and the rear plastic moulding attached to your van. Detach the cover by pulling it away, (the hinge section will tear easily). Put cover back in place and then feed the key ring through one of the cover holes and its associated base plate hole. Repeat for the remaining ring / holes.



**Chris Sanderson**

The rings will now give you hinges that will outlast your van !